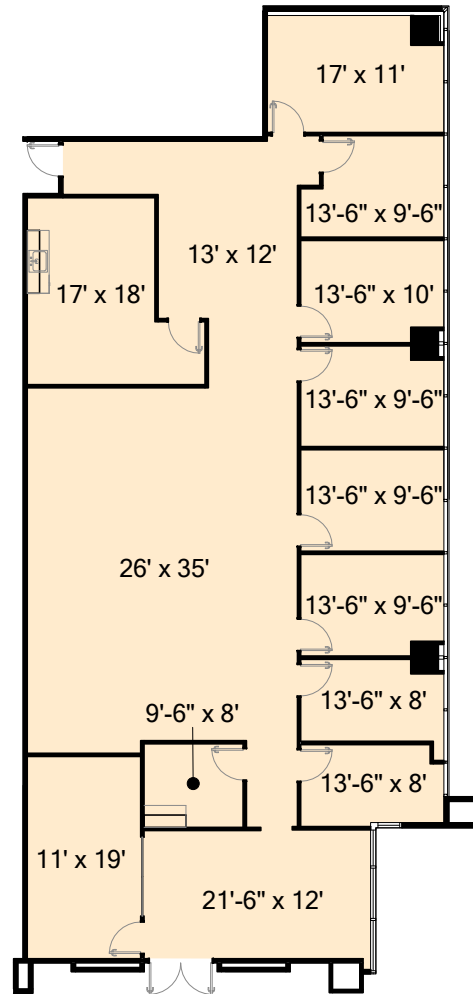


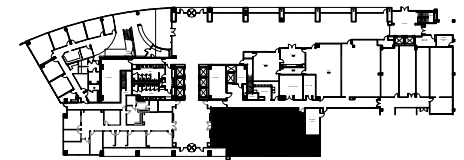
# GRANITE PARK THREE

5601 Granite Parkway, Plano, TX 75024

## Suite #110



3,780 RSF



**Granite**

[www.graniteprop.com](http://www.graniteprop.com)

972-731-2300

STAFFELBACH

ALL DIMENSIONS AND SQUARE FOOTAGE CALCULATIONS NOTED ON THIS DOCUMENT ARE PRELIMINARY/  
NON-BINDING AND MUST BE FIELD VERIFIED FOR TRUE AND ACCURATE REPRESENTATION.